

PART OF THE SE. 1/4, OF SECTION 15, T.6N., R.3W., S.L.B. & M.

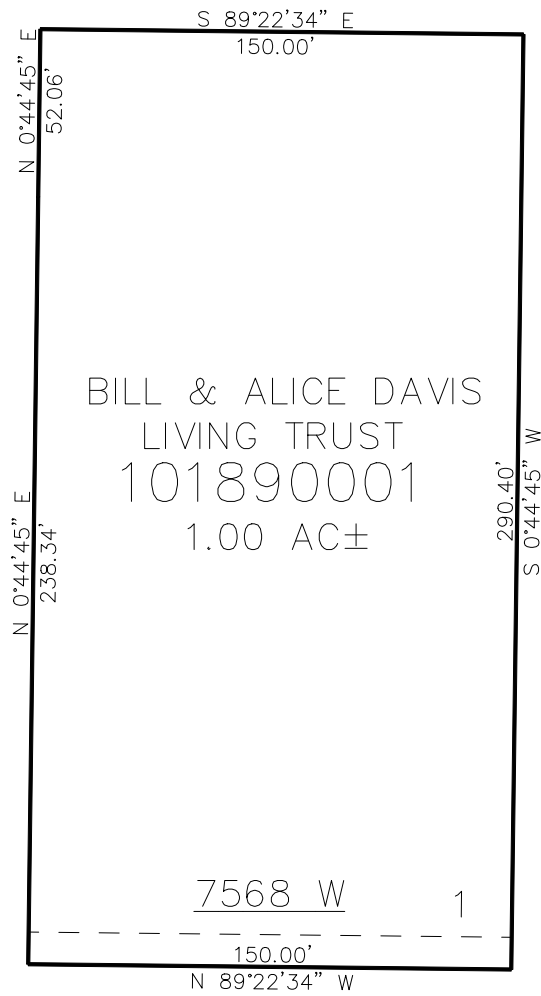
189

DAVIS FARMSTEAD

IN WEBER COUNTY

TAXING UNIT: 303

SCALE 1" = 30'



SEE PAGE 37

SEE PAGE 37

10' UTILITY & DRAINAGE EASEMENTS EACH
SIDE OF PROPERTY LINES AS INDICATED
BY DASHED LINES EXCEPT AS OTHERWISE
SHOWN.

FOR COMPLETE SURVEY DATA SEE
ORIGINAL DEDICATION PLAT IN
BOOK 94, PAGE 25 OF RECORDS.

900 SOUTH